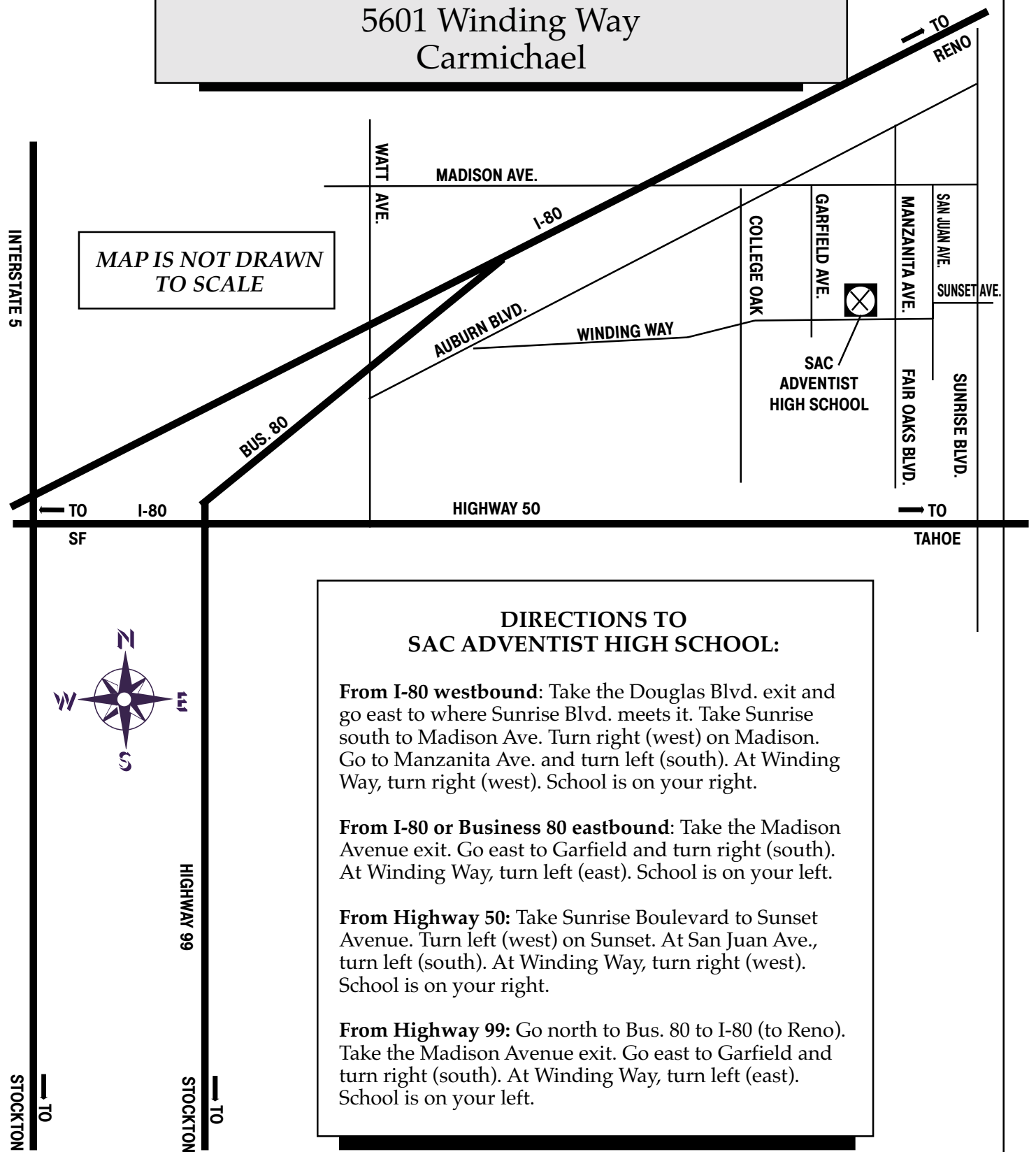


SACRAMENTO ADVENTIST HIGH SCHOOL

5601 Winding Way
Carmichael

MAP IS NOT DRAWN
TO SCALE



DIRECTIONS TO SAC ADVENTIST HIGH SCHOOL:

From I-80 westbound: Take the Douglas Blvd. exit and go east to where Sunrise Blvd. meets it. Take Sunrise south to Madison Ave. Turn right (west) on Madison. Go to Manzanita Ave. and turn left (south). At Winding Way, turn right (west). School is on your right.

From I-80 or Business 80 eastbound: Take the Madison Avenue exit. Go east to Garfield and turn right (south). At Winding Way, turn left (east). School is on your left.

From Highway 50: Take Sunrise Boulevard to Sunset Avenue. Turn left (west) on Sunset. At San Juan Ave., turn left (south). At Winding Way, turn right (west). School is on your right.

From Highway 99: Go north to Bus. 80 to I-80 (to Reno). Take the Madison Avenue exit. Go east to Garfield and turn right (south). At Winding Way, turn left (east). School is on your left.