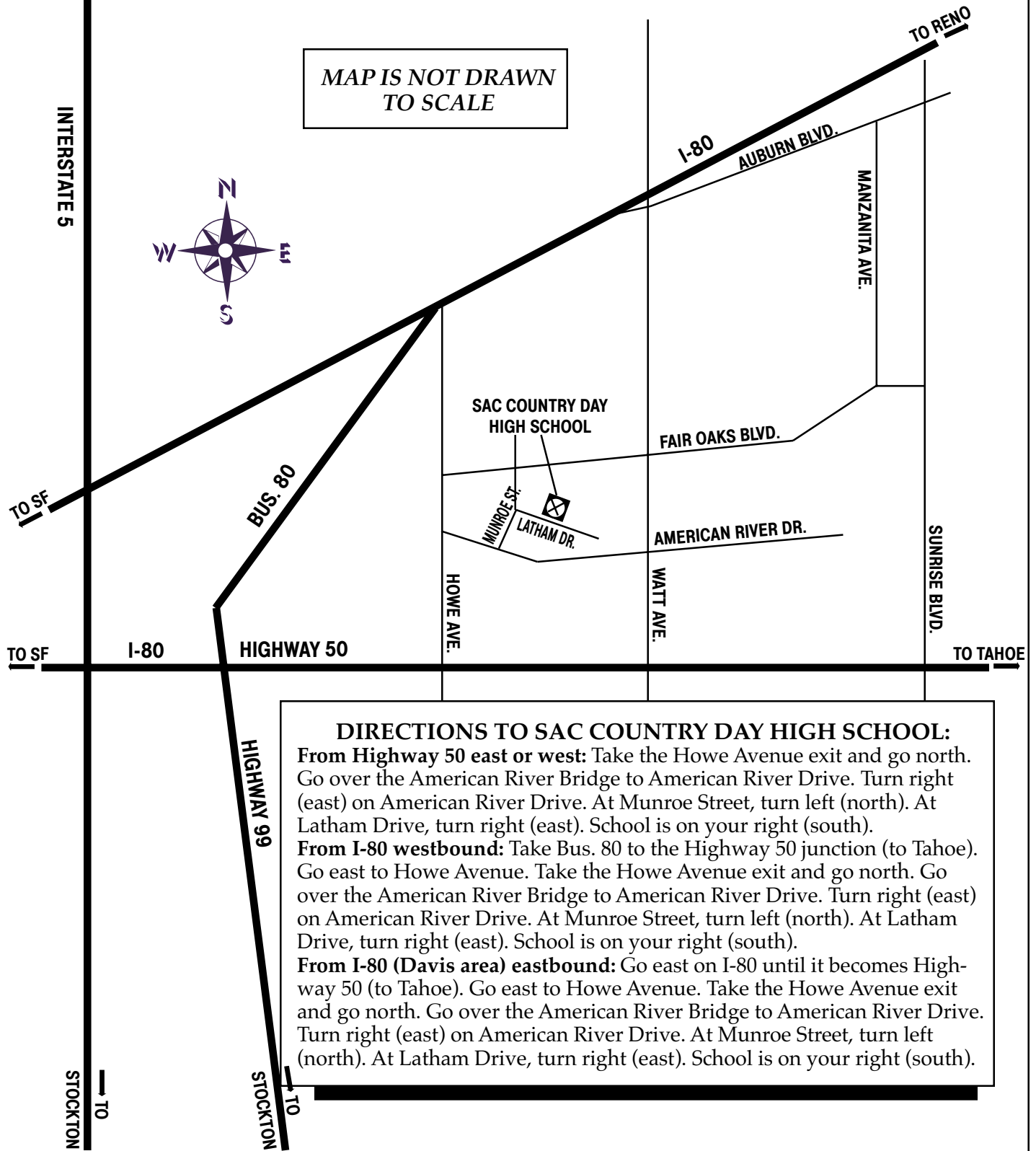


# SACRAMENTO COUNTRY DAY HIGH SCHOOL

2636 Latham Drive  
Sacramento

MAP IS NOT DRAWN  
TO SCALE



## DIRECTIONS TO SAC COUNTRY DAY HIGH SCHOOL:

**From Highway 50 east or west:** Take the Howe Avenue exit and go north. Go over the American River Bridge to American River Drive. Turn right (east) on American River Drive. At Munroe Street, turn left (north). At Latham Drive, turn right (east). School is on your right (south).

**From I-80 westbound:** Take Bus. 80 to the Highway 50 junction (to Tahoe). Go east to Howe Avenue. Take the Howe Avenue exit and go north. Go over the American River Bridge to American River Drive. Turn right (east) on American River Drive. At Munroe Street, turn left (north). At Latham Drive, turn right (east). School is on your right (south).

**From I-80 (Davis area) eastbound:** Go east on I-80 until it becomes Highway 50 (to Tahoe). Go east to Howe Avenue. Take the Howe Avenue exit and go north. Go over the American River Bridge to American River Drive. Turn right (east) on American River Drive. At Munroe Street, turn left (north). At Latham Drive, turn right (east). School is on your right (south).