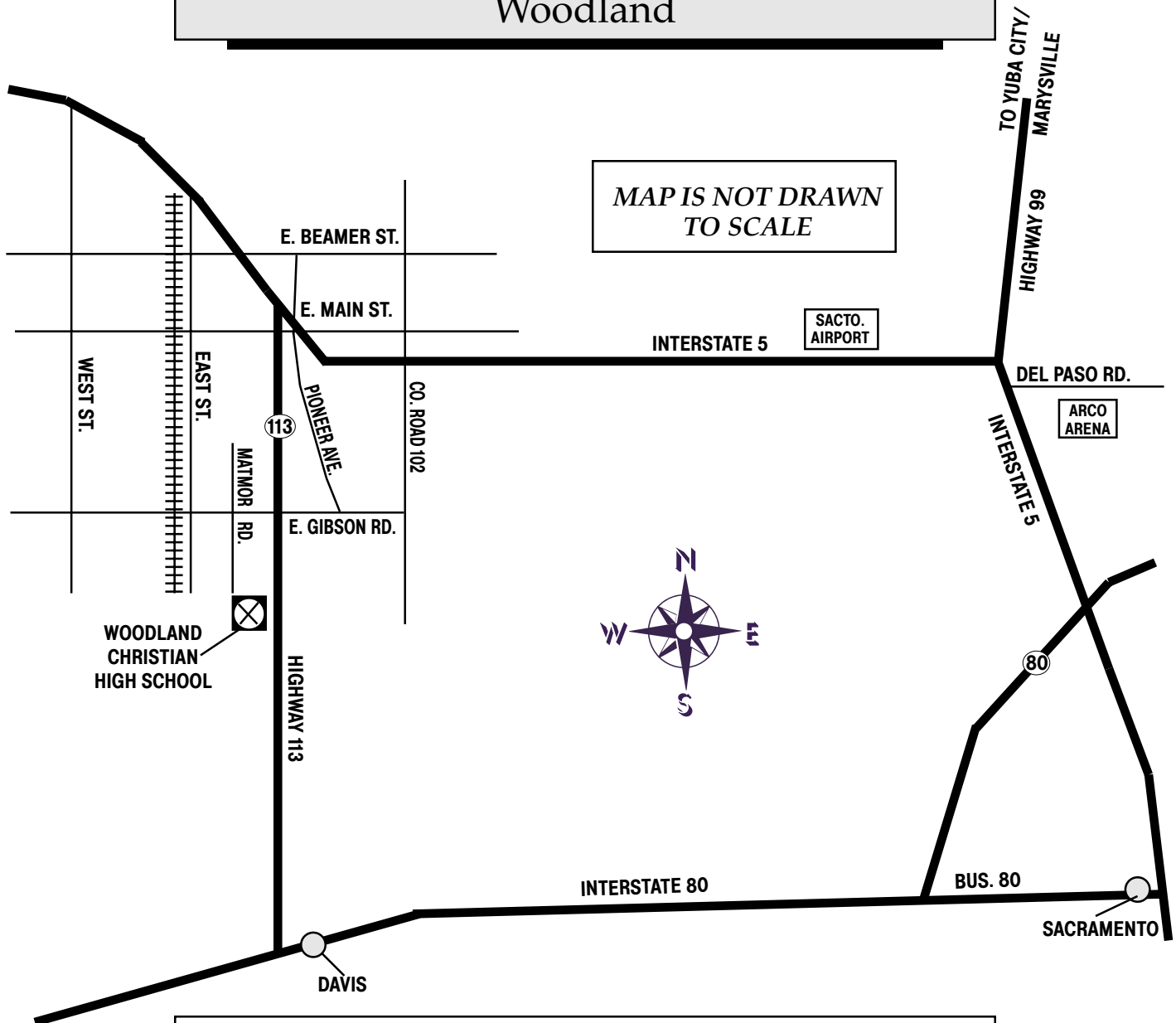


# WOODLAND CHRISTIAN HIGH SCHOOL

1787 Matmor Road  
Woodland

MAP IS NOT DRAWN  
TO SCALE



## DIRECTIONS TO WOODLAND CHRISTIAN HIGH SCHOOL:

**From I-5:** Take the County Road 102 exit (about 11 miles west of the Sacramento Airport) and go south to E. Gibson Road. At E. Gibson Road, turn right (west) and go about one and a half miles (across Highway 113) to Matmor Road. At Matmor Road, turn left (south). Matmor Road dead ends at the school.

**From Highway 113:** Going north or south on Highway 113, take the Gibson Road exit and go west to Matmor Road. At Matmor Road, turn left (south). Matmor Road dead ends at the school.