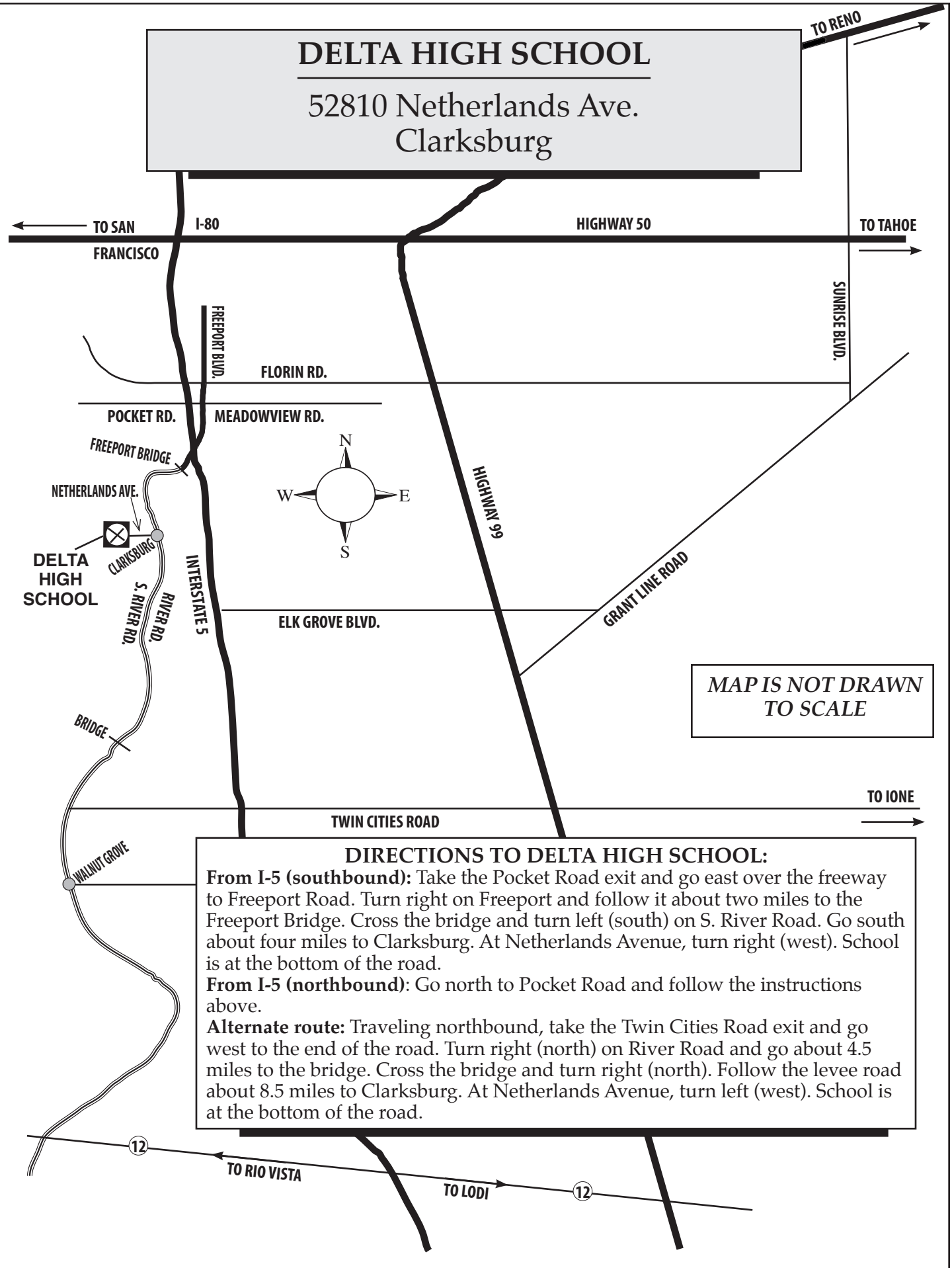


DELTA HIGH SCHOOL

52810 Netherlands Ave.
Clarksburg



MAP IS NOT DRAWN
TO SCALE

DIRECTIONS TO DELTA HIGH SCHOOL:

From I-5 (southbound): Take the Pocket Road exit and go east over the freeway to Freeport Road. Turn right on Freeport and follow it about two miles to the Freeport Bridge. Cross the bridge and turn left (south) on S. River Road. Go south about four miles to Clarksburg. At Netherlands Avenue, turn right (west). School is at the bottom of the road.

From I-5 (northbound): Go north to Pocket Road and follow the instructions above.

Alternate route: Traveling northbound, take the Twin Cities Road exit and go west to the end of the road. Turn right (north) on River Road and go about 4.5 miles to the bridge. Cross the bridge and turn right (north). Follow the levee road about 8.5 miles to Clarksburg. At Netherlands Avenue, turn left (west). School is at the bottom of the road.