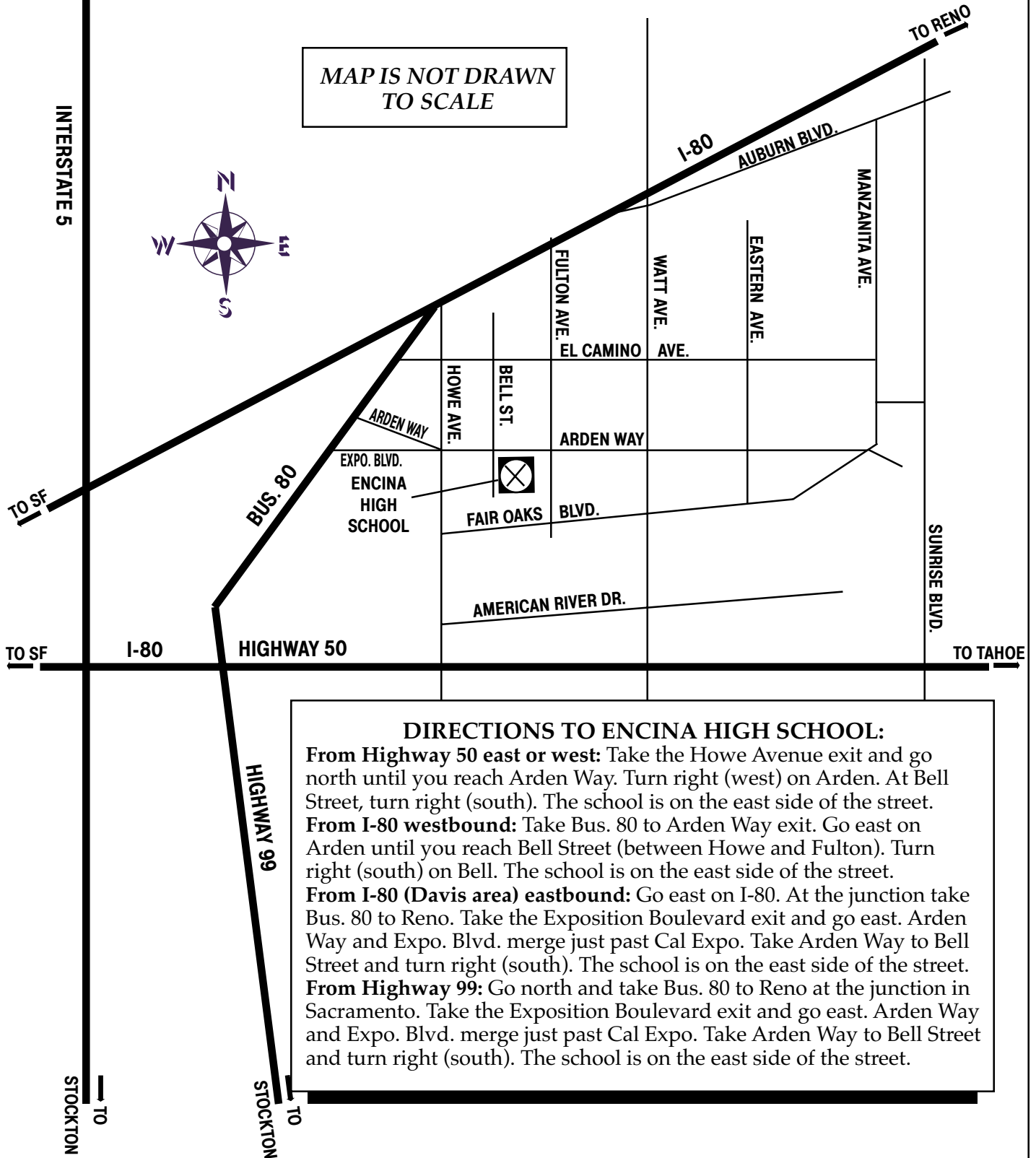


ENCINA HIGH SCHOOL

1400 Bell Street
Sacramento

MAP IS NOT DRAWN
TO SCALE



DIRECTIONS TO ENCINA HIGH SCHOOL:

From Highway 50 east or west: Take the Howe Avenue exit and go north until you reach Arden Way. Turn right (west) on Arden. At Bell Street, turn right (south). The school is on the east side of the street.

From I-80 westbound: Take Bus. 80 to Arden Way exit. Go east on Arden until you reach Bell Street (between Howe and Fulton). Turn right (south) on Bell. The school is on the east side of the street.

From I-80 (Davis area) eastbound: Go east on I-80. At the junction take Bus. 80 to Reno. Take the Exposition Boulevard exit and go east. Arden Way and Expo Blvd. merge just past Cal Expo. Take Arden Way to Bell Street and turn right (south). The school is on the east side of the street.

From Highway 99: Go north and take Bus. 80 to Reno at the junction in Sacramento. Take the Exposition Boulevard exit and go east. Arden Way and Expo Blvd. merge just past Cal Expo. Take Arden Way to Bell Street and turn right (south). The school is on the east side of the street.