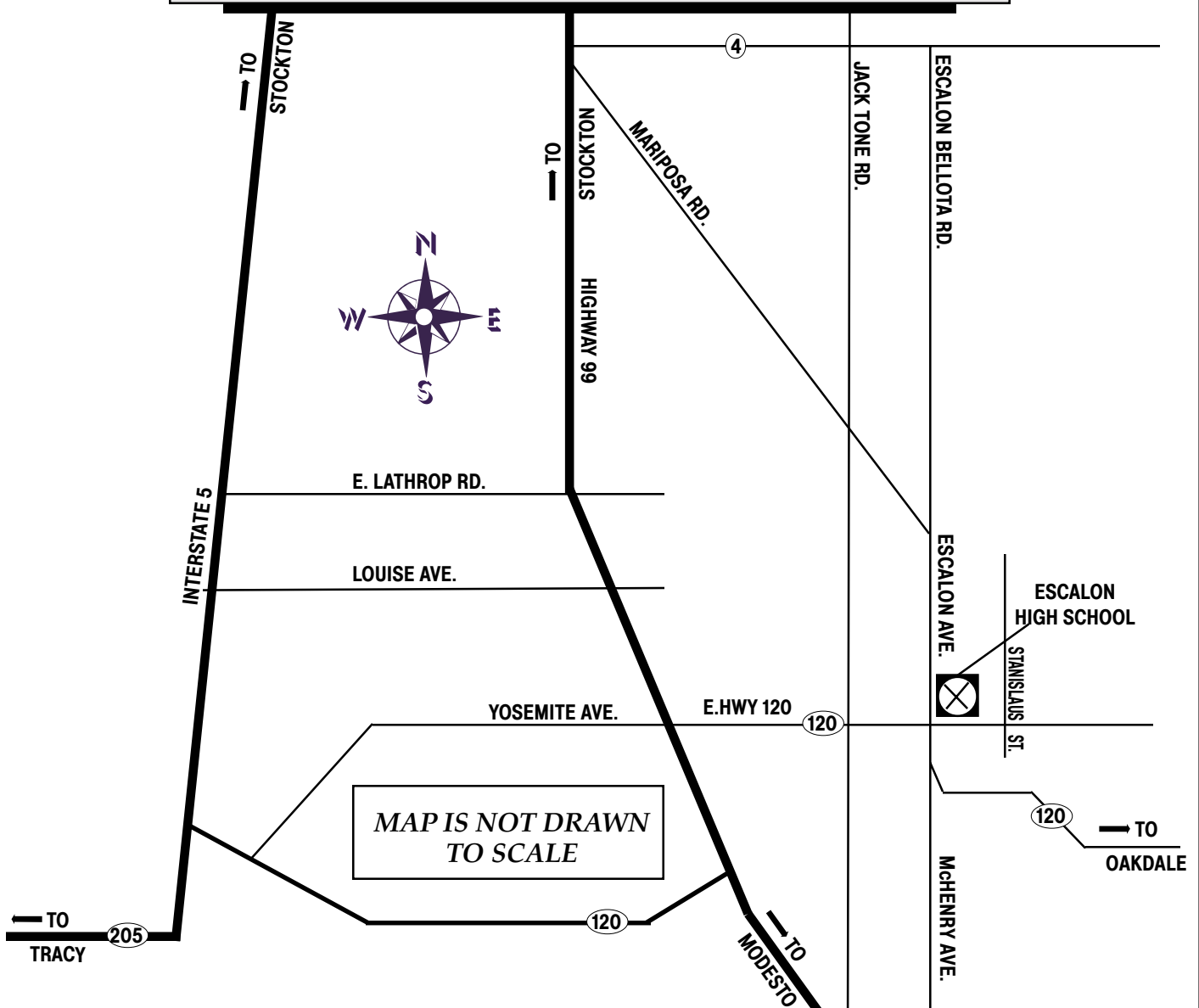


ESCALON HIGH SCHOOL

1528 Yosemite Avenue
Escalon



DIRECTIONS TO ESCALON HIGH SCHOOL:

From Highway 99 (Stockton and south): Take the Yosemite Avenue/Highway 120 East exit and go east on Highway 120 to Escalon. Once in Escalon, continue straight on Yosemite Avenue. The school is on the north side of the street.

From I-5: Take the 120 bypass east to Highway 99 north. At the 120 East exit go east to Escalon. Continued on Highway 120 (it becomes Yosemite Avenue). The school is on the north side of the street.

From Highway 4 east of Jack Tone Road: At Escalon Bellota Road, head south to Yosemite Avenue. At Yosemite Avenue, turn left (east). The school is on the north side of the street.

From Highway 99 (Stockton and north): Take the Mariposa Road exit. Follow Mariposa Road east to Escalon Bellota Road. Turn right at Escalon Bellota Road and follow it into Escalon. At Yosemite Avenue, turn left (east). The school is on the north side of the street.